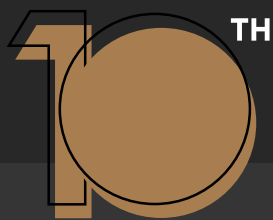




SANFORD

INFINITE CREATION



*ANNIVERSARY  
EDITION*

*Celebrating*



***ANNIVERSARY***

SANFORD is celebrating 10 years of business success,  
Ever since its inception, SANFORD has been committed  
to delivering high-quality solutions with a special focus  
on interior decoration.





WeThink

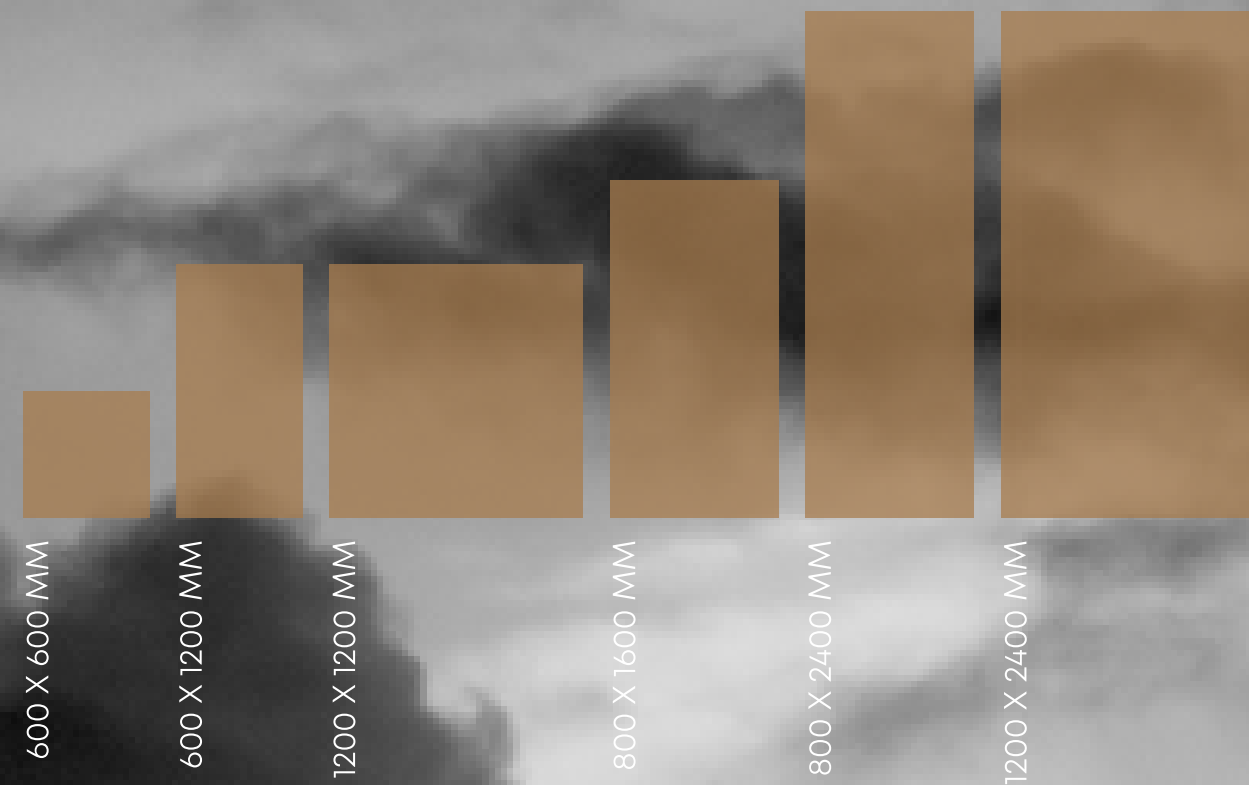


Defining excellence as we see it has become a natural process over the years.

We believe in the power of innovation, the uniqueness of Italian design, the importance of sustainability, the strength of discipline in all fields and the value of the people who work for us.

**For many years we have worked with the world's leading architects, managing cross-border projects, supporting their creative quest and exchanging valuable know-how in order to constantly improve our products and align our services with their evolving needs.**

We like to think of ourselves as real partners with real values that will sustain architectural excellence today, tomorrow and in the future.













*You must look ahead in order to  
move forward.*

*You can only make progress when  
you think "big"*



# Endless Advantages

-  Non - absorbent
-  Satin resistance
-  Resistance to UV
-  Hygienic
-  Hot resistance
-  frost resistance
-  Chemical resistance
-  Easy to clean
-  scratch resistance
-  High resistance to brex



# Our journey

Sanford The Branding Heart Cutting-Edge Technology Since 2010.

Since 2010, Sanford is spearheading the industry with its cutting-edge technology and outstanding design.

2010-2011

Sanford came in to existence and starts producing soluble salts.

2012-2013

Sanford participates in **ACE TECH** event and starts producing glazed porcelain tiles. **(PGVT/GVT)**

2014-2015

Sanford launches new sizes in **PGVT | GVT**.  
Sanford doubles its production capacity in **just 5 years**.

2016-2017

Sanford launches **20mm, 16mm, 12mm in fullbody**.  
The company participates in **ACE TECH** event and vibrant ceramic expo event.

2018-2019

Sanford launches its **own slab** production successfully.

2020-2021

Sanford provides extensive collection of tiles based on customer's **needs and expectations**.



# Our Export



- Usa
- Brazil
- Egypt
- Poland
- Saudi arabia
- South africa
- South korea
- Taiwan
- Uae
- France
- Yemen
- Mexico
- Greece
- Romania
- Ecuador
- Thiland
- Vietnam
- Indonesia
- Cambodia
- Bahrain
- Oman
- Qtar
- Iraq
- Russia
- Uk

*We Give You More Than Exporting*



**HOME INDOOR**  
FLOOR \_ WALL  
FLOOR RENOVATION



**COMMERCIAL & PUBLIC**  
FLOOR \_ WALL



**HOSPITALITY**  
FLOOR \_ WALL



**EXTERNAL CLADDING**  
WALL



**OFFICE BUILDING**  
FLOOR \_ WALL



**SHOP & BOUTIQUE**  
FLOOR \_ WALL  
LIGHT COMMERCIAL FLOOR RENOVATION

# Endless Destinations

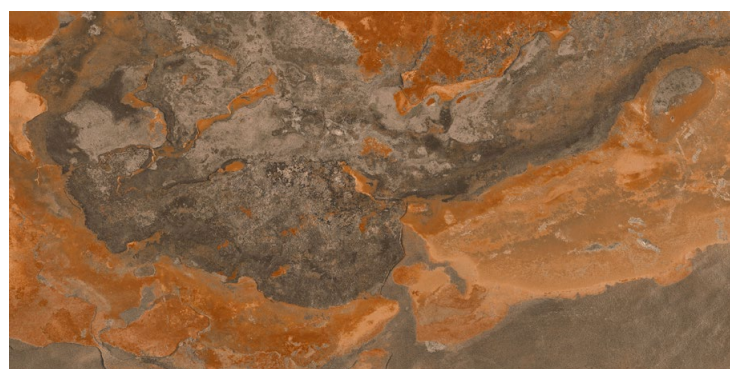
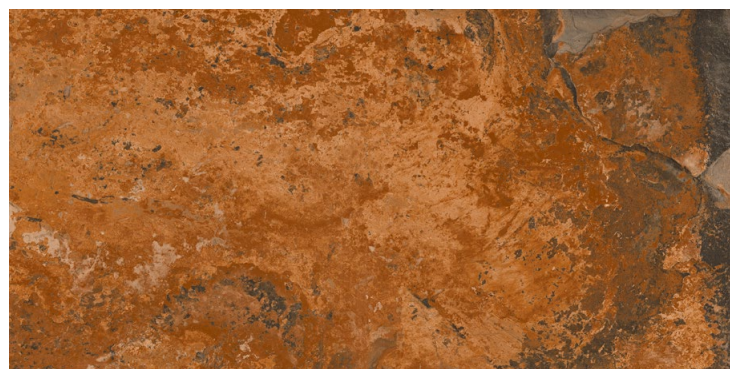
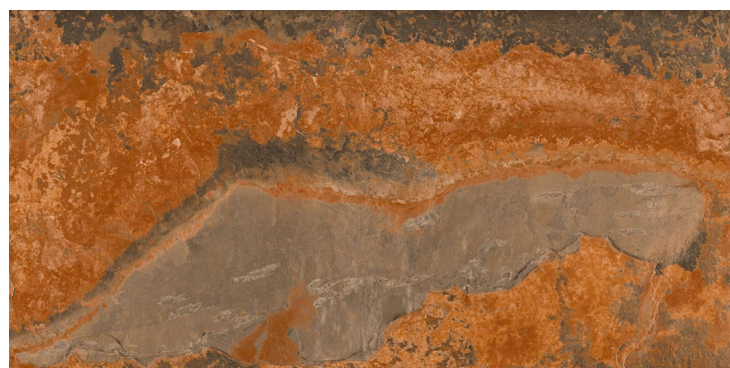
**A variety of solutions both technical and stylistic.**

Project Evolution slabs offer designers a vast selection of materials, with sizes and finishes that can add value to any type of interior environment: from hotels to airports, from lofts to country houses. In the same manner, they are an attractive and durable option for outdoor façades of private and public buildings.



## AQUA ECUADOR

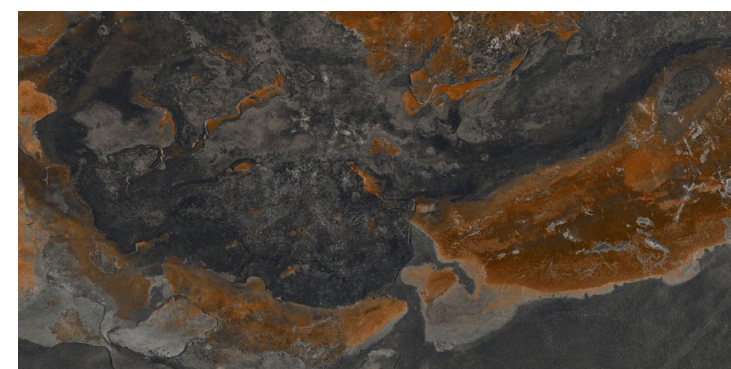
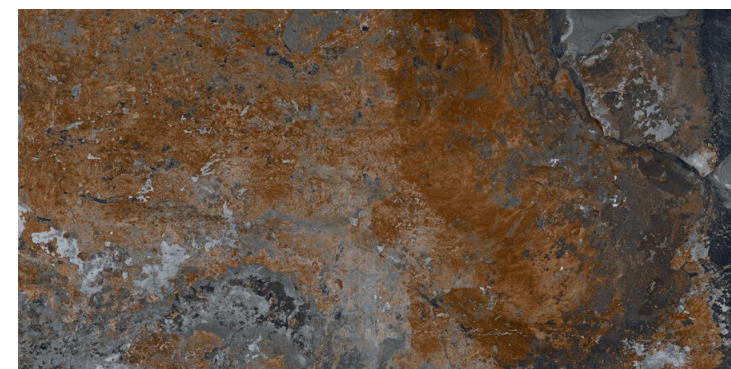
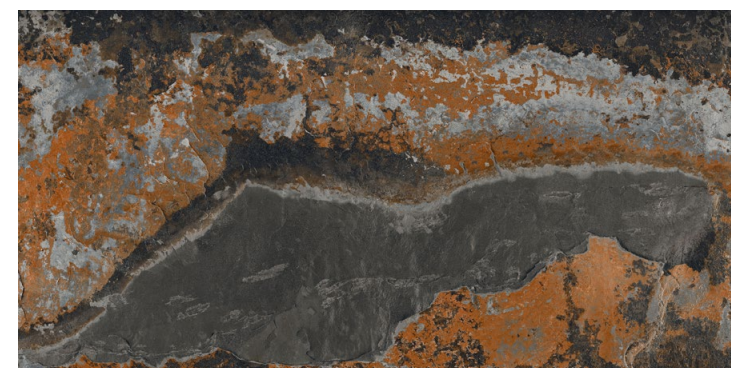
- 600X1200MM
- EXQUISITE, MATT STONE PUNCH



**COPPER  
STONE BROWN**

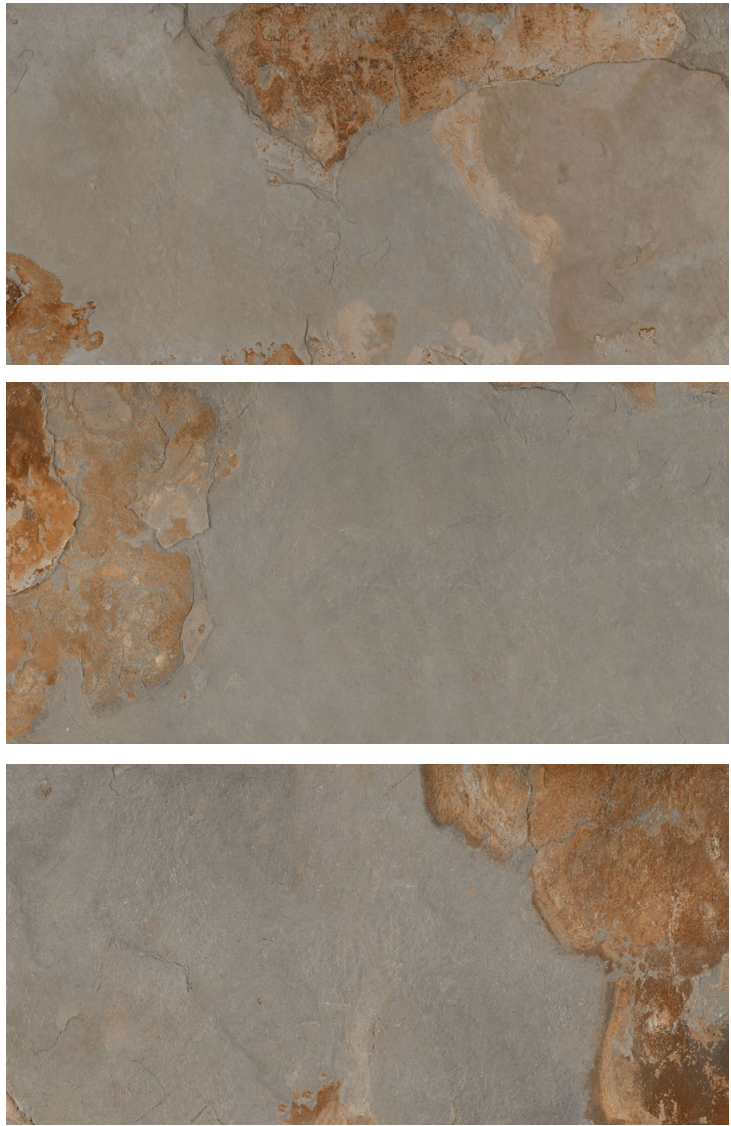
- 600X1200MM
- EXQUISITE, MATT STONE PUNCH





## COPPER STONE BLACK

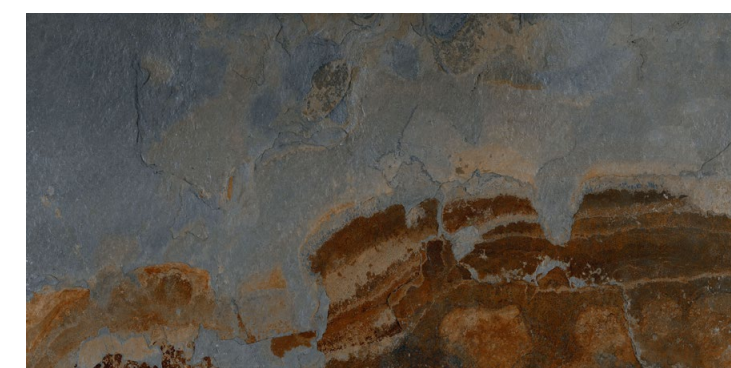
- 600X1200MM
- EXQUISITE, MATT STONE PUNCH



FRENCH COPPER  
LIGHT GREY

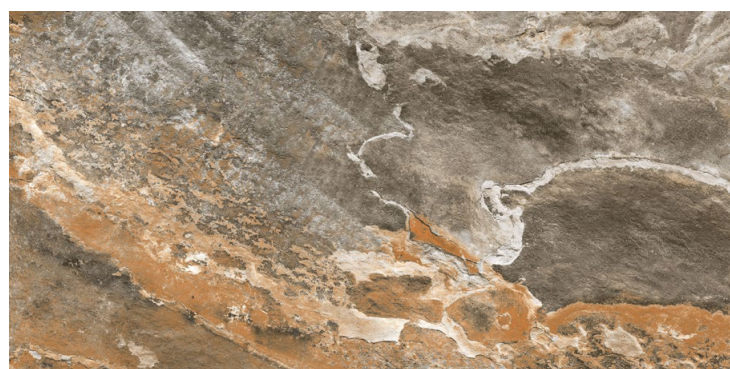
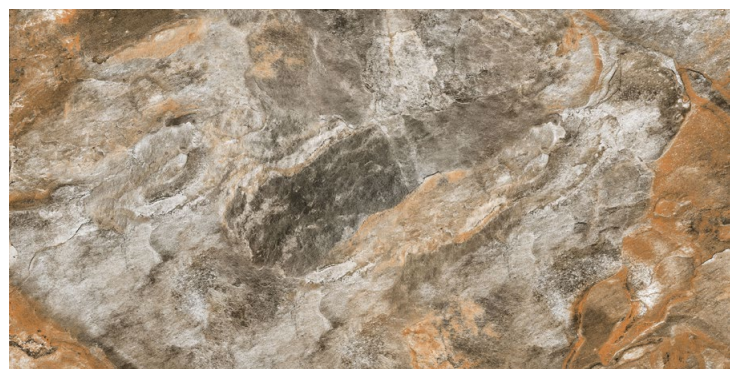
- 600X1200MM
- EXQUISITE, MATT STONE PUNCH





## FRENCH COPPER BLUE

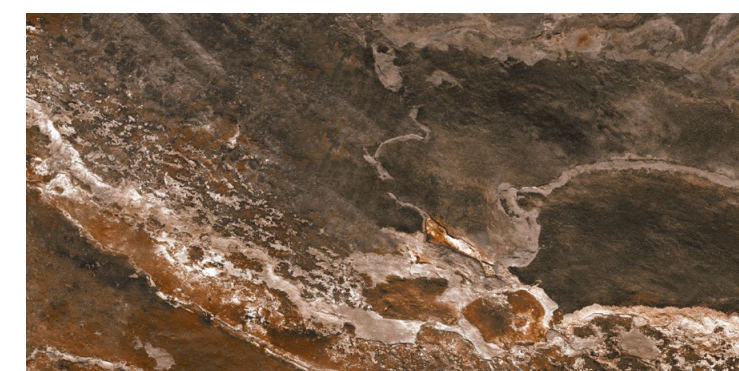
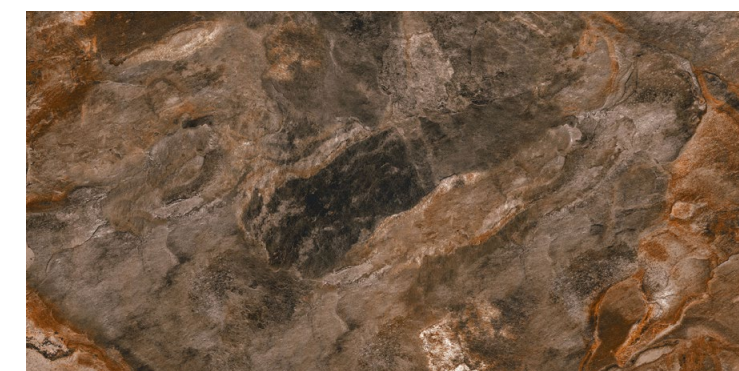
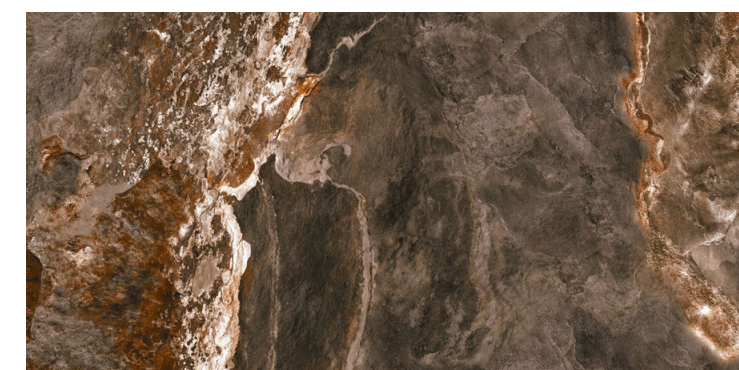
- 600X1200MM
- EXQUISITE, MATT STONE PUNCH



ROCK  
STONE BEIGE

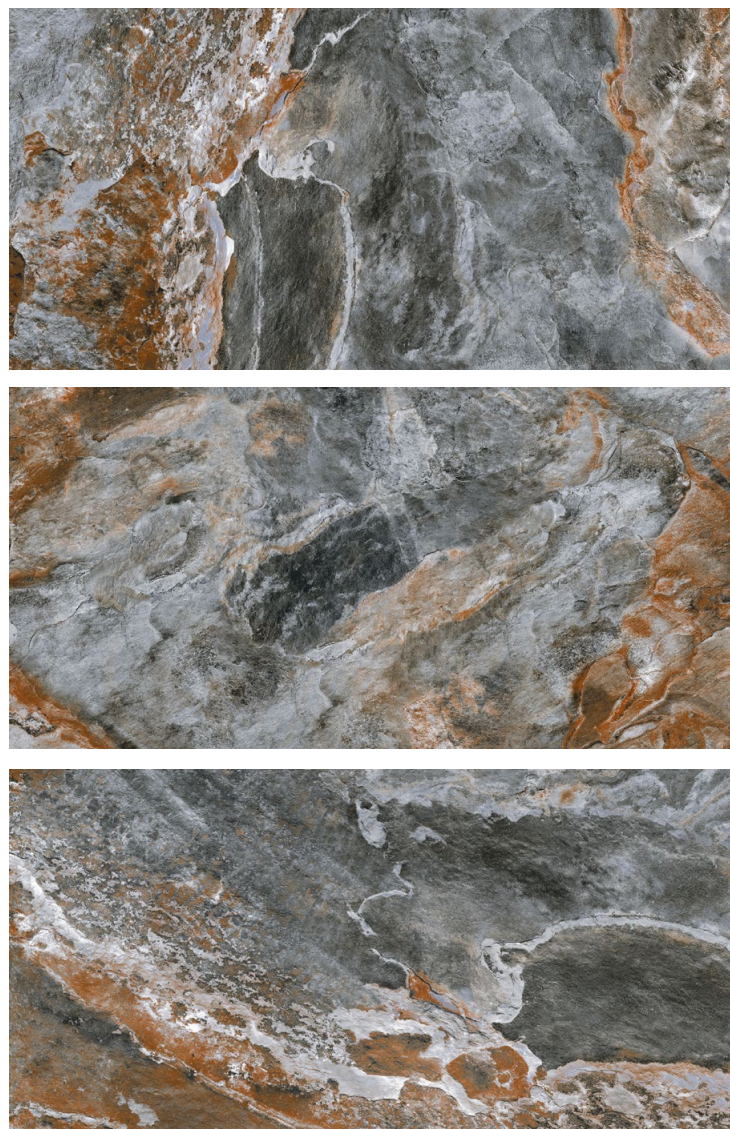
- 600X1200MM
- EXQUISITE, MATT STONE PUNCH





## ROCK STONE BROWN

- 600X1200MM
- EXQUISITE, MATT STONE PUNCH



# ROCK STONE GREY

- 600X1200MM
- EXQUISITE, MATT STONE PUNCH



Technical Specification

CHARACTERISTIC	STANDARD AS PER ISO-13006/EN 14411 GROUP Bla	MEAN VALUE OF POLISHED GVT	MEAN VALUE OF RUSTIC GVT	TEST METHOD
----------------	--	-------------------------------	-----------------------------	-------------

REGULATORY PROPERTIES				
Deviation in length & width	±0.5 %	±0.1 %	±0.1 %	ISO-10545-2
Deviation in thickness	±5.0 %	±4.0 %	±4.0 %	ISO-10545-2
Straightness in side	±0.5 %	±0.1 %	±0.1 %	ISO-10545-2
Rectangularity	±0.5 %	±0.1 %	±0.1 %	ISO-10545-2
Surface flatness	±0.5 %	±0.2 %	±0.2 %	ISO-10545-2
Color difference	Unaltered	No change	No change	ISO-10545-16
Glossiness	As per mfg	Min 90%	Min 4%	GLOSSOMETER

STRUCTURAL PROPERTIES				
Water absorption	< 0.50 %	< 0.20 %	< 0.20 %	ISO-10545-3
Apparent density	> 2.0 g/cc	>2.10 g/cc	>2.10 g/cc	DIN 51082

MASSIVE MECHANICAL PROPERTIES				
Modulus of rupture	Min. 35 N/mm²	Min. 40 N/mm²	Min. 40 N/mm²	ISO-10545-4
Breaking strength	Min. 1300 N	Min. 2000 N	Min. 2000 N	ISO-10545-4
Impact resistance	As per mfg.	Min. 0.55	Min. 0.55	ISO-10545-5

SURFACE MECHANICAL PROPERTIES				
Surface abrasion resistance	As per mfg.	Min. Class-3	Min. Class-4	ISO-10545-7
MOH's hardness	As per mfg.	Min. 4	Min. 5	EN 101

THERMO HYGROMETRIC PROPERTIES				
Frost resistance	No damage	No damage	No damage	ISO-10545-12
Thermal shock resistance	No damage	No damage	No damage	ISO-10545-9
Moisture expansion	Nil	Nil	Nil	ISO-10545-10
Thermal expansion (COE)	Max. 9.0 x 10 <sup>-6</sup>	Max. 6.5x10 <sup>-6</sup>	Max. 6.5 x 10 <sup>-6</sup>	ISO-10545-8
Crazing resistance	As per mfg.	Min. 10 Cycle	Min. 10 Cycle	ISO-10545-11

CHEMICAL PROPERTIES				
Chemical resistance	No damage	No damage	No damage	ISO-10545-13
Stain resistance	Resistant	Resistant	Resistant	ISO-10545-14

SAFETY PROPERTIES				
Slip resistance	As per mfg.	>0.40	>0.40	ISO-10545-17
Fire resistance	As per mfg.	Fire proof	Fire proof	N. A.
Lead & Cadmium given off by glazed tiles	As per mfg.	Does not yield Pb & Cd	Does not yield Pb & Cd	ISO-10545-15

PACKING DETAILS

SR. NO	PRODUCT	NOMINAL SIZE	THICKNESS	TILES PER BOX	COVERAGE AREA
1	VITRIFIED TILES	600x600mm	9mm	4	1.44 Sq. Mtr.
2	VITRIFIED TILES	600x1200mm	9.50mm	2	1.44 Sq. Mtr.
3	VITRIFIED TILES	200x1200mm	9.50mm	6	1.41 Sq. Mtr.
4	VITRIFIED TILES	800x1600mm	9mm	2	2.56 Sq. Mtr.
5	VITRIFIED TILES	1200x1200mm	9mm	2	2.88 Sq. Mtr.
6	VITRIFIED TILES	800x2400mm	15-18mm	1	1.92 Sq. Mtr.
7	VITRIFIED TILES	1200x2400mm	9mm	1	2.88 Sq. Mtr.



## **Sanford Vitrified Pvt Ltd**

**At:- Sartanpar, Tal:- Wankaner,  
Dist:- Morbi.  
Sartanpar - 363622  
Morbi.(Guj.)India.  
Phone: 02828 296680**

**Export:  
Phone: +91 9909908726  
Email: [export@sanfordvitrified.com](mailto:export@sanfordvitrified.com)**

**Domestic:  
Phone: +91 9909908710  
Email: [marketing@sanfordvitrified.com](mailto:marketing@sanfordvitrified.com)**